



NetCOBOL for Windows

Executive Summary

NetCOBOL® for Windows is the best compiler and development environment for migrating your mainframe batch applications to PCs. It provides excellent performance and high reliability. It can be used either as a complete development environment or as a complimentary product to NetCOBOL for .NET when NetCOBOL for Windows features are required (PowerBSORT, PowerFORM, and the Data Tools, for example).

Migrate Mainframe Batch Jobs

Use NetCOBOL for Windows with zBatch (a JCL execution utility that is integrated exclusively with NetCOBOL) to bring JCL job streams and batch COBOL programs to the PC with very little change. You can realize substantial cost savings, faster job execution (depending on your current mainframe loads), more convenient job execution and more usable output report formats (such as RTF or HTML).

Windows Program Development

NetCOBOL for Windows can be used as a fully self-contained environment for developing Windows applications. It provides all the tools you require such as an integrated development environment with a COBOL-sensitive editor and debugger, as well as utilities to assist in setting up the execution environment. It is a particularly convenient environment if you work with extended ASCII characters (characters represented by more than one byte in UTF-8) as data is handled by default using ANSI Code Pages.

Expand Your .NET Options

NetCOBOL for Windows can also be a useful add-on to NetCOBOL for .NET. NetCOBOL supports interoperation between the Windows and .NET code if different parts of your application need to work in the two environments. NetCOBOL for Windows also contains a number of tools which provide more options and abilities to .NET developers such as:

- PowerBSORT, a high performance, professional data sort/merge/filter package
- PowerFORM, a graphical report design and execution tool
- Data Converter, for converting files between COBOL/CSV/XML formats and ASCII/EBCDIC/Unicode character sets
- Data Editor, for COBOL field-sensitive data file editing

Fujitsu Software Corporation
1250 East Arques Avenue
Sunnyvale, CA 94085
Phone: (800) 545-6774 or (408) 428-0300
Fax: (408) 746-6369
Email: cobol@netcobol.com
Web: www.netcobol.com

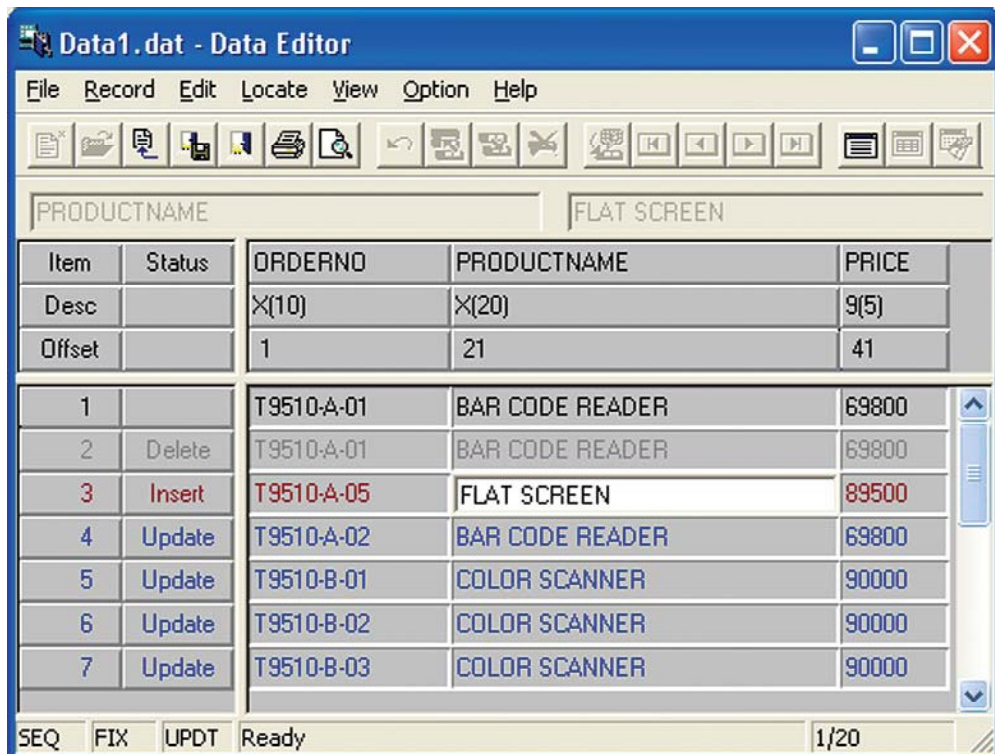


Highlights

- Highest performance and reliability
- Embedded SQL Preprocessor with ODBC support
- CGI, ISAPI and SAF support subroutines
- Converts data between COBOL data files and XML
- Creates and works with COM/DCOM objects
- COBOL objects invocable from Active Server Pages®
- Supports multi-threaded execution (Server Run-time)
- Provides event logging, troubleshooting information on abends and just-in-time debugging
- Supports Unicode application development.

Data Access

You can use embedded SQL to access the most popular databases such as SQL Server™, Oracle®, Informix®, Sybase®, as well as any ODBC-compliant database, eliminating the need for complex and costly database conversions.



Above: The Data Editor offers field-sensitive COBOL record editing, with the ability to select ranges of records to be edited, or records satisfying particular conditions, as well as which fields should be displayed.

Below: The Data Converter facilitates data file conversion.

